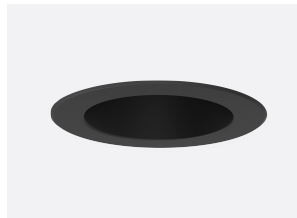
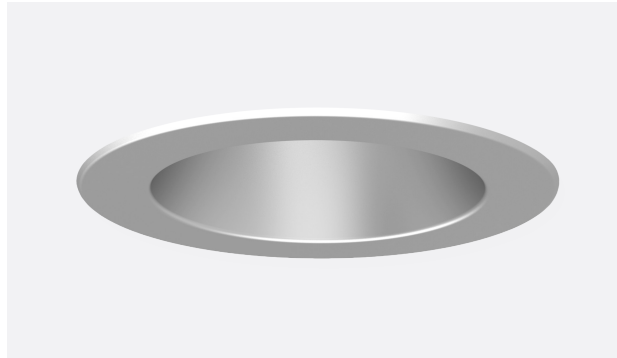


DUO 2" ROUND

INACCESSIBLE CEILINGS

DOWNLIGHT / ADJUSTABLE ACCENT / WALL WASH

Spectrum's 2" aperture recessed LED downlight fixture is ideal for application where discrete lighting is desired. Suitable for inaccessible and non-insulated ceilings only. Multiple beam distributions provide flexibility to the lighting designer.



DOWNLIGHT LUMENS / WATTAGE DATA			
PART NUMBER	DELIVERED LUMENS	SYSTEM WATTS	LPW
2DL835KM302DMW	772	6.44	120.03
2DL1035KM302DMW	1240	10.99	112.83
2DL1535KM302DMW	1624	14.77	109.95
2DL2035KM302DMW	2293	22.38	102.46

ADJUSTABLE LUMENS / WATTAGE DATA			
PART NUMBER	DELIVERED LUMENS	SYSTEM WATTS	LPW
2AL835KM302AMW	665	6.44	103.26
2AL1035KM302AMW	1023	10.99	93.08
2AL1535KM302AMW	1302	14.72	88.45
2AL2035KM302AMW	1952	22.41	87.1

WALL WASH LUMENS / WATTAGE DATA			
PART NUMBER	DELIVERED LUMENS	SYSTEM WATTS	LPW
2DL835KM302LW6MW	537	6.45	83.26
2DL1035KM302LW6MW	838	10.98	76.32
2DL1535KM302LW6MW	1085	14.76	73.51
2DL2035KM302LW6MW	1548	22.91	67.57

PRODUCT SELECTOR GUIDE

FRAME-IN KIT	DLA ASSEMBLY	LUMENS	CCT	OPTIC	DIMMING	INPUT VOLTAGE	TRIM	TRIM OPTIONS	TRIM FINISH	FLANGE FINISH
RM2LFKNA	2DLNA	10	3K	S20	DX	E1	2D	L5	MW	MF

FIXTURE HOUSING SPECIFICATION

FRAME-IN KIT	DLA ASSEMBLY	LUMENS	CCT	OPTIC ¹	DIMMING	INPUT VOLTAGE
2LFKNA (NEW CONSTRUCTION STYLE)	2DLNA (DOWNLIGHT & WALL WASH)	80 CRI		27K 2700K 3K 3000K 35K 3500K 4K 4000K	DOWNLIGHT S20 20° M30 25° W40 32° XW55 39° W ² Wide Distribution	E1 120 Volt E2 277 Volt
		8 772 Lm 10 1240 Lm 15 1624 Lm 20 2293 Lm				
RM2LFKNA (REMODEL STYLE)	2ALNA (ADJUSTABLE ACCENT)	90 CRI		ADJUSTABLE S20 22° M30 29° W40 41° XW55 54°	FORWARD/REVERSE PHASE DM 120V 2-wire, (DS2W1 / ELV/MLV, 120V)	
		8C9 634 Lm 10C9 1018 Lm 15C9 1333 Lm 20C9 1883 Lm				
		Nominal Delivered lumens from Downlight at 35K 80/90 CRI M30		1 Beam Distribution based on open trim 2 Wide Distribution optic is required when using the HC - Honey Comb Louver		

TRIM / MODULE SPECIFICATION

TRIM	TRIM OPTIONS	TRIM FINISH	FLANGE FINISH / OPTIONS
DOWNLIGHT	DOWNLIGHT ONLY	MW Matte White MB Matte Black PT Platinum Silver SG Soft Glow CC Custom Color	MF ³ Match Flange WF White Flange CCF Custom Color Flange NF ⁴ Flangeless Kit
2D Open Downlight Trim	L5 Frosted Lens L7 Solite Micro-Prismatic Lens L9 Clear Lens		
ADJUSTABLE	HC ² Honey Comb Louver		
2A Open Adjustable Trim			
WALL WASH			
2LW6 Lensed Wall Wash Trim			



COPYRIGHT 2026 SPECTRUM LIGHTING, INC.

FINISH**MW**
Matte White**MB**
Matte Black**PT**
Platinum Silver**PRODUCT FEATURES****FRAME-IN KIT:**

Heavy-gauge galvanized steel frame-in with cast-aluminum ceiling clamp collar, is available to ship and preinstall prior to insertion of the downlight (DLA) assembly. Accommodates ceiling thickness up to 1.5 inches (Remodel is 3/4"). Locking clamp collar firmly attaches frame-in to ceiling material and engages DLA for a firm fit. All DLAs (downlight, adjustable, wall wash) are interchangeable with same frame-in kit. Vertically adjustable mounting brackets accept expandable hanger bars which are included.

DOWNLIGHT ASSEMBLY (DLA):

LED module provides reliable operation and consistent color between fixtures. CRI = 80. Available in 90 CRI. Corded driver assembly features a wiring compartment with a single knock-out enabling a duplex connector to be used for in and out branch wiring. Quick connectors between DLA and driver. DLA and driver are accessible from below, by removing DLA and driver can from the ceiling plenum through the installation hole.

DIMMING:

Standard product is compatible with 0-10 volt dimming controls (1%) or 120 volt two-wire, forward/reverse phase (1%). For other dimming options such as Lutron and eldoLED, see other product styles that are only suitable for accessible ceilings.

REFLECTOR:

Downlight: Dual-optic system includes upper reflector which determines the beam distribution and lower trim to finish the ceiling. Standard finish is matte white with matching flange. Optional finishes available. Round, square, downlight, and wall wash are interchangeable with same housing. Flangeless option (NF) installs after frame-ins are installed and can be added at a later date if desired. (NF not available on remodel style).

Adjustable Accent: Dual-optic system includes upper reflector which determines the beam distribution and lower trim to finish the ceiling. Standard finish is matte white with matching flange. Optional finishes available. Round and square adjustable trims are interchangeable with same housing. Trims are retained securely using magnets. Flangeless option (NF) installs after frame-ins are installed and can be added at a later date if desired. (NF not available in remodel style).

Wall Wash: Angled laminated film lens illuminates vertical wall surfaces. Standard finish is matte white with matching flange. Optional finishes available. Round, square, downlight, and wall wash are interchangeable with same housing. Flangeless option (NF) installs after frame-ins are installed and can be added at a later date if desired. (NF not available on remodel style).

ELECTRICAL:

120 or 277 VAC, 50-60 Hz.

HEAT MANAGEMENT:

Engineered heat sink provides passive cooling for optimum heat management of the LED engine.

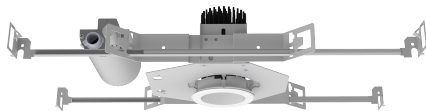
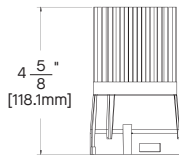
- Expected lamp life to be 50,000 hours with 70% lumen maintenance when ambient temperatures do not exceed 25C. Lower ambient temperatures yield longer lamp life.

FIXTURE DIMENSIONS

2DLNA & 2D - Downlight

2ALNA & 2A - Adjustable

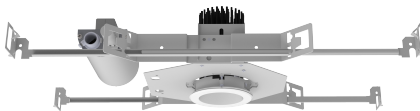
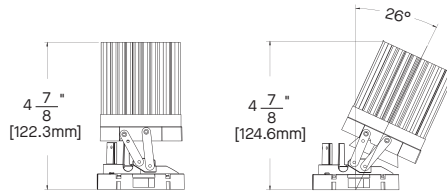
2DLNA & 2LW6 - Wall Wash



DOWNLIGHT TRIM SHOWN WITH 2LFKNA - NEW CONSTRUCTION STYLE



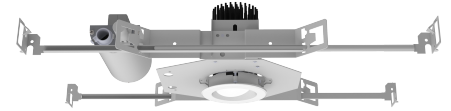
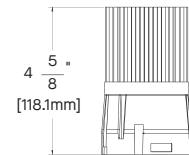
DOWNLIGHT TRIM SHOWN WITH RM2LFKNA - REMODEL STYLE



ADJUSTABLE TRIM SHOWN WITH 2LFKNA - NEW CONSTRUCTION STYLE



ADJUSTABLE TRIM SHOWN WITH RM2LFKNA - REMODEL STYLE



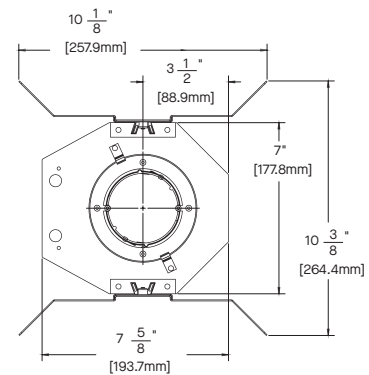
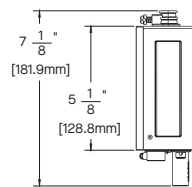
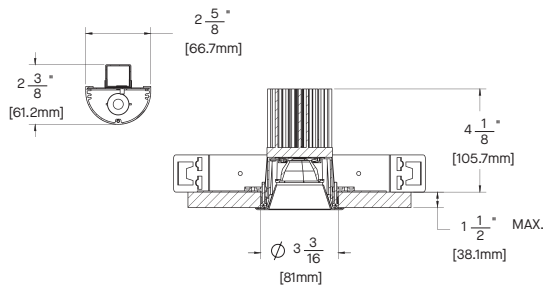
WALL WASH TRIM SHOWN WITH 2LFKNA - NEW CONSTRUCTION STYLE



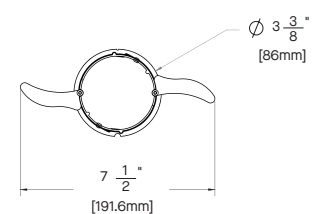
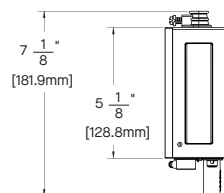
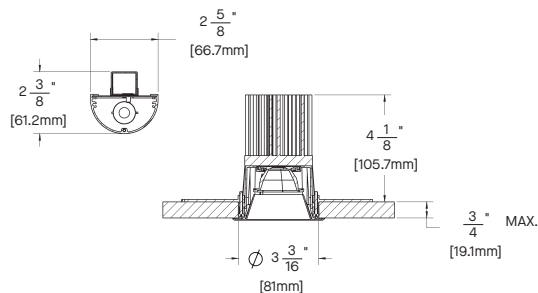
WALL WASH TRIM SHOWN WITH RM2LFKNA - REMODEL STYLE

HOUSING DIMENSIONS

2LFKNA - New Construction Style

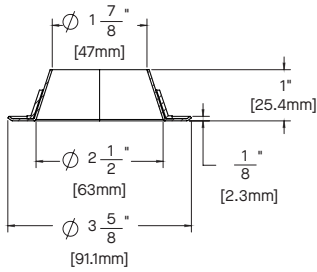


RM2LFKNA - Remodel Style

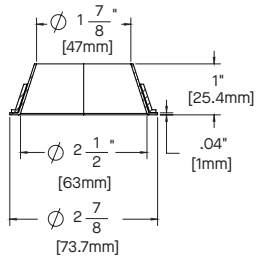


TRIM / MODULE DATA

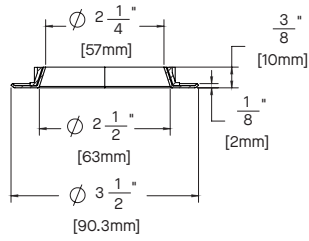
2D - Open Downlight Trim



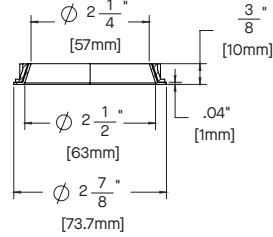
2D NF - Open Downlight Trim with Flangeless Kit



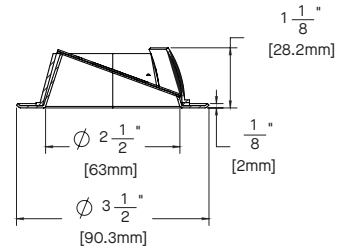
2A - Open Adjustable Trim



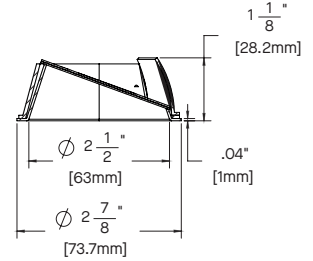
2A NF - Open Adjustable Trim with Flangeless Kit



2LW6 - Lensed Wall Wash Trim



2LW6 NF - Lensed Wall Wash Trim with Flangeless Kit



2DL2035KS202DMW - Downlight

CANDLEPOWER CURVE TEST SP-R918	INTENSITY CANDELA 0° AZIMUTH	ZONAL LUMENS	SINGLE UNIT: PERFORMANCE HORIZONTAL FOOTCANDLES INITIAL DOWNLIGHT ONLY				MULTIPLE UNITS: PERFORMANCE 80/50/20% REFLECTANCES HORIZONTAL FOOTCANDLES AND WATTS/SQ FT							
			Mounting Distance	FC at Beam Center	Diameter at Beam Angle	FC at Beam Edge	Ceiling Height	Fixture Spacing	RCR 4		RCR 6			
	0.00°	0° - 10°	733	31%	5.5'	342 fc	1.9'	165 fc	9'	2'	537	5.42	436	4.80
	5.00°	0° - 20°	1512	65%	6.5'	245 fc	2.3'	118 fc	12'	2'	565	5.71	522	5.75
	10.00°	0° - 30°	2033	87%	7.5'	184 fc	2.6'	89 fc	16'	4'	124	1.26	146	1.60
	15.00°	0° - 40°	2179	93%	8.5'	143 fc	3.0'	69 fc	Delivered Illuminance Rating: (DIR)		99 FC per W/Sq. Ft.		91 FC per W/Sq. Ft.	
	20.00°	0° - 60°	2271	97%	10.0'	104 fc	3.5'	50 fc	Recessed Mounting Square rooms used for multiple units: - RCR 4: Length & Width = Ceiling Ht. -2.5' x 2.50 - RCR 6: Length & Width = Ceiling Ht. -2.5' x 1.66 * Average Initial Footcandles at 2.5' Above Floor					
	30.00°	0° - 80°	2335	100%	12.0'	72 fc	4.2'	35 fc						
	40.00°	0° - 90°	2344	100%	14.0'	53 fc	4.9'	25 fc						
	50.00°				16.0'	40 fc	5.7'	19 fc						
	60.00°													
	70.00°													
	80.00°													
	90.00°													
		Total	2344	100%										

Delivered Lumens: **2344** CP at 0deg (Nadir): **10353** Beam Angle: **20.03** Lumen Multiplier: **8L x 0.337, 10L x 0.541, 15L x 0.708**
 Luminaire Watts: **22.36** CRI: **80+** Spacing Ratio: **0.3** CCT Multiplier: **27K x 0.919, 30K x 0.977, 40K x 1.005, 27HK x 0.924, 30HK x 0.963, 35HK x 1.0, 40HK 1.021**
 LER: **104.83**

2DL2035KM302DMW - Downlight

CANDLEPOWER CURVE TEST SP-R919	INTENSITY CANDELA 0° AZIMUTH	ZONAL LUMENS	SINGLE UNIT: PERFORMANCE HORIZONTAL FOOTCANDLES INITIAL DOWNLIGHT ONLY				MULTIPLE UNITS: PERFORMANCE 80/50/20% REFLECTANCES HORIZONTAL FOOTCANDLES AND WATTS/SQ FT							
			Mounting Distance	FC at Beam Center	Diameter at Beam Angle	FC at Beam Edge	Ceiling Height	Fixture Spacing	RCR 4		RCR 6			
	0.00°	0° - 10°	546	24%	5.5'	238 fc	2.5'	112 fc	9'	2'	515	5.42	414	4.81
	5.00°	0° - 20°	1346	59%	6.5'	171 fc	2.9'	80 fc	12'	2'	456	4.80	380	4.41
	10.00°	0° - 30°	1931	84%	7.5'	128 fc	3.4'	60 fc	16'	4'	119	1.26	96	1.11
	15.00°	0° - 40°	2110	92%	8.5'	100 fc	3.8'	47 fc	Delivered Illuminance Rating: (DIR)		95 FC per W/Sq. Ft.		86 FC per W/Sq. Ft.	
	20.00°	0° - 60°	2216	97%	10.0'	72 fc	4.5'	34 fc	Recessed Mounting Square rooms used for multiple units: - RCR 4: Length & Width = Ceiling Ht. -2.5' x 2.50 - RCR 6: Length & Width = Ceiling Ht. -2.5' x 1.66 * Average Initial Footcandles at 2.5' Above Floor					
	30.00°	0° - 80°	2284	100%	12.0'	50 fc	5.4'	24 fc						
	40.00°	0° - 90°	2293	100%	14.0'	37 fc	6.3'	17 fc						
	50.00°				16.0'	28 fc	7.2'	13 fc						
	60.00°													
	70.00°													
	80.00°													
	90.00°													
		Total	2293	100%										

Delivered Lumens: **2293** CP at 0deg (Nadir): **7213** Beam Angle: **25.3** Lumen Multiplier: **27K x 0.919, 30K x 0.977, 40K x 1.005, 27HK x 0.924, 30HK x 0.963, 35HK x 1.0, 40HK 1.021**
 Luminaire Watts: **22.38** CRI: **80+** Spacing Ratio: **0.39** CCT Multiplier: **27K x 0.919, 30K x 0.977, 40K x 1.005, 27HK x 0.924, 30HK x 0.963, 35HK x 1.0, 40HK 1.021**
 LER: **102.46**

2DL2035KW402DMW - Downlight

CANDLEPOWER CURVE TEST SP-R920	INTENSITY CANDELA 0° AZIMUTH	ZONAL LUMENS	SINGLE UNIT: PERFORMANCE HORIZONTAL FOOTCANDLES INITIAL DOWNLIGHT ONLY				MULTIPLE UNITS: PERFORMANCE 80/50/20% REFLECTANCES HORIZONTAL FOOTCANDLES AND WATTS/SQ FT							
			Mounting Distance	FC at Beam Center	Diameter at Beam Angle	FC at Beam Edge	Ceiling Height	Fixture Spacing	RCR 3		RCR 5			
	0.00°	0° - 10°	387	17%	5.5'	166 fc	3.2'	75 fc	9'	2'	579	5.78	423	4.77
	5027	0° - 20°	1133	48%	6.5'	119 fc	3.7'	54 fc	12'	4'	143	1.43	138	1.55
	15.00°	0° - 30°	1826	78%	7.5'	89 fc	4.3'	40 fc	16'	6'	54	0.54	44	0.49
	2521	0° - 40°	2110	90%	8.5'	70 fc	4.9'	31 fc	Delivered Illuminance Rating: (DIR)		100 FC per W/Sq. Ft.		89 FC per W/Sq. Ft.	
	936	0° - 60°	2261	97%	10.0'	50 fc	5.7'	23 fc	Recessed Mounting Square rooms used for multiple units: - RCR 3: Length & Width = Ceiling Ht. -2.5' x 3.33 - RCR 5: Length & Width = Ceiling Ht. -2.5' x 2.00 * Average Initial Footcandles at 2.5' Above Floor					
	49	0° - 80°	2331	100%	12.0'	35 fc	6.9'	16 fc						
		0° - 90°	2340	100%	14.0'	26 fc	8.0'	12 fc						
					16.0'	20 fc	9.2'	9 fc						
			Total	2340	100%									

Delivered Lumens: **2340** CP at 0deg (Nadir): **5027** Beam Angle: **32.02** Lumen Multiplier: **8L x 0.337, 10L x 0.541, 15L x 0.708**
 Luminaire Watts: **22.37** CRI: **80+** Spacing Ratio: **0.48** CCT Multiplier: **27K x 0.919, 30K x 0.977, 40K x 1.005, 27HK x 0.924, 30HK x 0.963, 35HK x 1.0, 40HK 1.021**
 LER: **104.60**

DUO 2" ROUND

INACCESSIBLE CEILINGS



Spectrum Lighting

2DL2035KXW552DMW - Downlight

CANDLEPOWER CURVE TEST SP-R921	INTENSITY CANDELA 0° AZIMUTH	ZONAL LUMENS	SINGLE UNIT: PERFORMANCE HORIZONTAL FOOTCANDLES INITIAL DOWNLIGHT ONLY				MULTIPLE UNITS: PERFORMANCE 80/50/20% REFLECTANCES HORIZONTAL FOOTCANDLES AND WATTS/SQ FT							
			Mounting Distance	FC at Beam Center	Diameter at Beam Angle	FC at Beam Edge	Ceiling Height	Fixture Spacing	RCR 3		RCR 5			
	0.00°	0° - 10°	300	13%	5.5'	130 fc	3.9'	55 fc	9'	2'	457	4.77	401	4.77
	0.00°	0° - 20°	932	41%	6.5'	93 fc	4.6'	39 fc	12'	4'	137	1.43	130	1.55
	15.00°	0° - 30°	1678	75%	7.5'	70 fc	5.3'	29 fc	16'	6'	52	0.54	41	0.49
	30.00°	0° - 40°	2022	90%	8.5'	54 fc	6.0'	23 fc	Delivered Illuminance Rating: (DIR)		96 FC per W/Sq. Ft.		84 FC per W/Sq. Ft.	
	60.00°	0° - 60°	2170	97%	10.0'	39 fc	7.1'	17 fc	Recessed Mounting Square rooms used for multiple units: - RCR 3: Length & Width = Ceiling Ht. -2.5' x 3.33 - RCR 5: Length & Width = Ceiling Ht. -2.5' x 2.00 * Average Initial Footcandles at 2.5' Above Floor					
	60.00°	0° - 80°	2239	100%	12.0'	27 fc	8.5'	11 fc						
	90.00°	0° - 90°	2248	100%	14.0'	20 fc	9.9'	8 fc						
	90.00°	Total	2248	100%	16.0'	15 fc	11.3'	6 fc						

Delivered Lumens: 2248
Luminaire Watts: 22.37
LER: 100.49

CP at 0deg (Nadir): 3927
CRI: 80+

Beam Angle: 38.91
Spacing Ratio: 0.55

Lumen Multiplier: 8L x 0.337, 10L x 0.541, 15L x 0.708
27K x 0.919, 30K x 0.977, 40K x 1.005, 27HK x 0.924,
30HK x 0.963, 35HK x 1.0, 40HK 1.021

2AL2035KS202AMW-MAX - Adjustable

CANDLEPOWER CURVE TEST SP-R1758	INTENSITY	ZONAL LUMENS	INITIAL FC ON VERTICAL PLANE 30° aiming angle				INITIAL FC ON HORIZONTAL PLANE 30° aiming angle																
			A	B	C	W	L1	L2	A	B	C	W	L1	L2									
	CP at 0°	0° - 10°	98	5%	2'	3.5'	34 fc	38 fc	15 fc	5 fc	1.5'	3.5'	1.2'	6'	3.5'	20 fc	13 fc	9 fc	7 fc	2.7'	3.1'	1.4'	
	0°	1086	0° - 20°	458	21%	3'	5.2'	15 fc	17 fc	7 fc	2 fc	2.3'	5.2'	1.7'	8'	4.6'	11 fc	7 fc	5 fc	4 fc	3.6'	4.2'	1.8'
	5°	1337	0° - 30°	1224	56%	4'	6.9'	8 fc	10 fc	4 fc	1 fc	3.1'	6.9'	2.3'	10'	5.8'	7 fc	5 fc	3 fc	2 fc	4.4'	5.2'	2.3'
	15°	3737	0° - 40°	1863	86%	6'	10.4'	4 fc	4 fc	2 fc	1 fc	4.6'	10.4'	3.5'	12'	6.9'	5 fc	3 fc	2 fc	2 fc	5.3'	6.2'	2.8'
	25°	8729	0° - 60°	2134	98%	Dimensions W, L1 and L2 based on beam angle																	
	35°	6234	0° - 80°	2166	100%	Dimensions W, L1 and L2 based on beam angle																	
	45°	1723	0° - 90°	2175	100%																		
	55°	64																					
	65°	18																					
	75°	9																					
85°	8																						
90°	6																						

Delivered Lumens: 2175
Luminaire Watts: 22.47
Efficacy: 96.80

CP at 0° (Nadir): 1086
CRI: 80+

Beam Angle: 22°

Lumen Multiplier: 8L x 0.274, 10L x 0.454, 15L x 0.548
27K x 0.919, 30K x 0.977, 40K x 1.005, 27HK x 0.924,
30HK x 0.963, 35HK x 1.0, 40HK 1.021

2AL2035KM302AMW-MAX - Adjustable

CANDLEPOWER CURVE TEST SP-R1760	INTENSITY	ZONAL LUMENS	INITIAL FC ON VERTICAL PLANE 30° aiming angle				INITIAL FC ON HORIZONTAL PLANE 30° aiming angle																
			A	B	C	W	L1	L2	A	B	C	W	L1	L2									
	CP at 0°	0° - 10°	103	5%	2'	3.5'	37 fc	51 fc	14 fc	3 fc	2.1'	5.3'	1.4'	6'	3.5'	21 fc	15 fc	10 fc	6 fc	3.6'	4.3'	1.8'	
	0°	1168	0° - 20°	438	21%	3'	5.2'	16 fc	23 fc	6 fc	1 fc	3.2'	8.0'	2.2'	8'	4.6'	12 fc	8 fc	6 fc	3 fc	4.9'	5.7'	2.4'
	5°	1429	0° - 30°	1042	50%	4'	6.9'	9 fc	13 fc	4 fc	1 fc	4.2'	10.6'	2.9'	10'	5.8'	8 fc	5 fc	4 fc	2 fc	6.1'	7.2'	3.0'
	15°	3115	0° - 40°	1651	80%	6'	10.4'	4 fc	6 fc	2 fc	0 fc	6.3'	15.9'	4.3'	12'	6.9'	5 fc	4 fc	2 fc	1 fc	7.3'	8.6'	3.7'
	25°	5042	0° - 60°	2028	98%	Dimensions W, L1 and L2 based on beam angle																	
	35°	4471	0° - 80°	2060	100%	Dimensions W, L1 and L2 based on beam angle																	
	45°	2013	0° - 90°	2066	100%																		
	55°	182																					
	65°	30																					
	75°	7																					
85°	3																						
90°	3																						

Delivered Lumens: 2066
Luminaire Watts: 22.8
Efficacy: 90.61

CP at 0° (Nadir): 1168
CRI: 80+

Beam Angle: 29°

CCT Multiplier: 27K x 0.919, 30K x 0.977, 40K x 1.005, 27HK x 0.924,
30HK x 0.963, 35HK x 1.0, 40HK 1.021

DUO 2" ROUND

INACCESSIBLE CEILINGS



Spectrum Lighting

2AL2035KW402AMW-MAX - Adjustable

CANDLEPOWER CURVE TEST SP-R1762	INTENSITY	ZONAL LUMENS	INITIAL FC ON VERTICAL PLANE 30° aiming angle	INITIAL FC ON HORIZONTAL PLANE 30° aiming angle			
	CP at 0°						
	0°	1412			0° - 10°	131	7%
	5°	1799			0° - 20°	486	25%
	15°	2944			0° - 30°	1005	52%
	25°	3484			0° - 40°	1517	78%
	35°	3274			0° - 60°	1893	97%
	45°	1799			0° - 80°	1937	100%
	55°	397			0° - 90°	1944	100%
	65°	83					
	75°	7					
	85°	4					
90°	3						

A	B	C	1	2	3	W	L1	L2
2'	3.5'	44 fc	81 fc	14 fc	1 fc	3.0'	10.2'	1.8'
3'	5.2'	20 fc	36 fc	6 fc	0 fc	4.5'	15.4'	2.7'
4'	6.9'	11 fc	20 fc	4 fc	0 fc	6.0'	20.5'	3.6'
6'	10.4'	5 fc	9 fc	2 fc	0 fc	9.0'	30.7'	5.4'

A	B	C	1	2	3	W	L1	L2
6'	3.5'	25 fc	19 fc	11 fc	5 fc	5.2'	6.3'	2.5'
8'	4.6'	14 fc	11 fc	6 fc	3 fc	6.9'	8.3'	3.3'
10'	5.8'	9 fc	7 fc	4 fc	2 fc	8.6'	10.4'	4.1'
12'	6.9'	6 fc	5 fc	3 fc	1 fc	10.3'	12.5'	4.9'

Delivered Lumens: 1944 CP at 0° (Nadir): 1412 Beam Angle: 41° Lumen Multiplier: 8L x 0.274, 10L x 0.454, 15L x 0.548
 Luminaire Watts: 22.84 CCT Multiplier: 27K x 0.919, 30K x 0.977, 40K x 1.005, 27HK x 0.924, 30HK x 0.963, 35HK x 1.0, 40HK 1.021
 Efficacy: 85.11 CRI: 80+

2AL2035KXW552AMW-MAX - Adjustable

CANDLEPOWER CURVE TEST SP-R1744	INTENSITY	ZONAL LUMENS	INITIAL FC ON VERTICAL PLANE 30° aiming angle	INITIAL FC ON HORIZONTAL PLANE 30° aiming angle			
	CP at 0°						
	0°	2056			0° - 10°	196	11%
	5°	2365			0° - 20°	693	39%
	15°	2755			0° - 30°	1220	69%
	25°	2443			0° - 40°	1586	89%
	35°	1925			0° - 60°	1744	98%
	45°	542			0° - 80°	1773	100%
	55°	88			0° - 90°	1781	100%
	65°	6					
	75°	5					
	85°	2					
90°	3						

A	B	C	1	2	3	W	L1	L2
2'	3.5'	64 fc	147 fc	16 fc	0 fc	3.9'	27.5'	2.1'
3'	5.2'	29 fc	65 fc	7 fc	0 fc	5.9'	41.3'	3.2'
4'	6.9'	16 fc	37 fc	4 fc	0 fc	7.8'	55.0'	4.2'
6'	10.4'	7 fc	16 fc	2 fc	0 fc	11.7'	82.5'	6.4'

A	B	C	1	2	3	W	L1	L2
6'	3.5'	37 fc	28 fc	15 fc	5 fc	6.8'	8.5'	3.0'
8'	4.6'	21 fc	16 fc	8 fc	3 fc	9.0'	11.3'	4.1'
10'	5.8'	13 fc	10 fc	5 fc	2 fc	11.3'	14.2'	5.1'
12'	6.9'	9 fc	7 fc	4 fc	1 fc	13.5'	17.0'	6.1'

Delivered Lumens: 1781 CP at 0° (Nadir): 2056 Beam Angle: 52° Lumen Multiplier: 8L x 0.274, 10L x 0.454, 15L x 0.548
 Luminaire Watts: 22.71 CCT Multiplier: 27K x 0.919, 30K x 0.977, 40K x 1.005, 27HK x 0.924, 30HK x 0.963, 35HK x 1.0, 40HK 1.021
 Efficacy: 78.42 CRI: 80+

DUO 2" ROUND

INACCESSIBLE CEILINGS

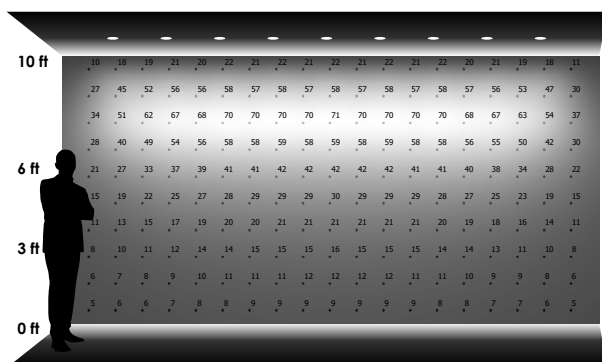


Spectrum Lighting

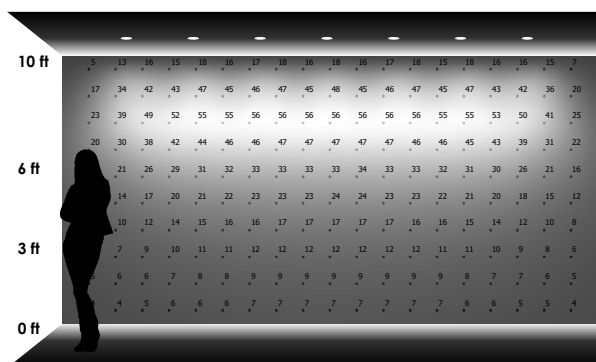
2DL2Q35KW2LW6MW - Wall Wash

CANDLEPOWER CURVE TEST SP-R1530	PERFORMANCE SUMMARY	REFERENCE DIAGRAM
	<p>Delivered Lumens: 1548 Luminaire Watts: 22.91 LER: 67.57</p> <p>CP at 0deg (Nadir): 609 CRI: 80+</p> <p>CCT Multiplier: 27K x 0.919, 30K x 0.977, 40K x 1.005, 27HK x 0.924, 30HK x 0.963, 35HK x 1.0, 40HK 1.021</p>	

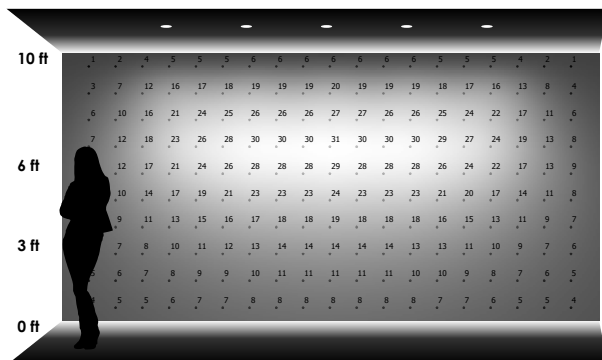
PERFORMANCE DATA - INITIAL ILLUMINATION (FOOTCANDLES) ON WALL - DIRECT LIGHT ONLY



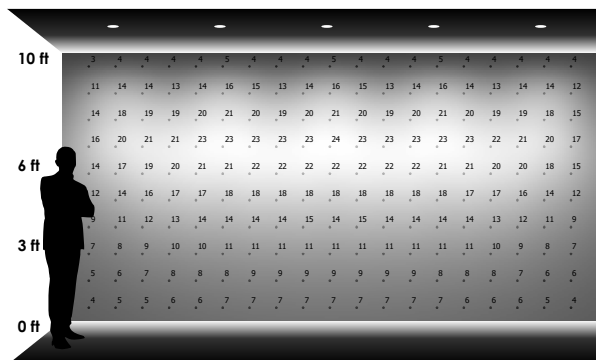
9 LUMINAIRES
 2' - 0" away from wall
 2' - 0" between luminaires



7 LUMINAIRES
 2' - 6" away from wall
 2' - 6" between luminaires



5 LUMINAIRES
 3' - 0" away from wall
 3' - 0" between luminaires



5 LUMINAIRES
 3' - 0" away from wall
 4' - 0" between luminaires